

March  
2024 **6<sup>TH</sup>**

AT THE FARM - BRANDON, MANITOBA  
1:30 PM CST - WEDNESDAY

**MAR MAC  
FARMS**

**BUILT SALE**

A PROGRAM *you can*  
**HANG YOUR HAT ON**

MCRAE LAND & LIVESTOCK | ANGUS VALLEY FARMS | MC-THREE FARMS | SPRINGHILL FARM | STRIKER CATTLE CO.



PREMIER BREEDER & PREMIER EXHIBITOR AT THE NATIONAL RED ANGUS SHOW AT THE 50TH AG EX 2023.

JOIN US NOON SALE DAY FOR A  
**ROAST BEEF MEAL PREPARED BY J&S MEATS**  
 SOUTH BRANDON CARROLL 4-H BEEF CLUB WILL BE SELLING DESSERT

Our sale barn is heated but the bulls are on display outside, so dress accordingly

**WELCOME TO OUR 20TH ANNUAL MAR MAC FARMS & GUESTS BULL SALE**

It is hard to believe we have hosted 20 bull sales at the farm. Previous to that we sold in joint sales in Brandon for 10 years.

What an exciting time to be in the cattle industry. Fall of 2023 saw record calf prices. Cull cows and bulls were at all time highs. Now is the time to evaluate your old herd bulls and replace them with fresh new genetics.

We are a 5th Generation Farm where everyone is involved in the day-to-day operations. Our grandson and granddaughter are the 6th generation both enjoy spending time outside on the farm. We love to be part of Agriculture and take pride in producing a top-quality product. We try to keep up with all the Verified and Sustainable Beef Programs for the betterment of the Beef Industry.

Mar Mac Farms are proud to be members of the Canadian Angus Association for 68 years (40 years in Red Angus) and the

Canadian Simmental Association for 47 years.

The bulls in this sale are being developed to promote longevity and fertility. Our bulls are not pampered. This year is a group of bulls from young sires we have produced or purchased - Lincoln, Simplify and Admission have worked extremely well for us leaving respectable birth weights but still the thick quartered, easy fleshing kind of bulls we like to produce.

This fall we showed at the Canadian National Red Angus Show in Brandon. We are honored to be the Premier Breeder and Premier Exhibitor of the Show. It was also very special for the McRae family to celebrate the 50 years of the Ag Ex Show, because the McRae family have exhibited at every one of the 50 Shows.

Our guests consignors bulls have been here since weaning and have been developed on the same ration as the Mar

Mac Bulls – We welcome McRae Land And Livestock, Angus Valley Farm, Mc-Three Farm, Springhill Farm and new this year Striker Cattle Co.

Our sale team: T Bar C Cattle Co. and Bohrsen Marketing have all seen the bulls and would be happy to discuss the bulls with you.

Hosting a sale takes lots of time and we would like to thank our friends and neighbours who jump in and help us whenever needed.

Special thanks to Tyson McRae who works at Mar Mac Farms for all his dedicated effort in our program.

We look forward to visiting with you and discussing your bull needs. We would personally like to thank you for supporting our BEEF Program.

-Blair & Lois McRae

WE ARE A FIFTH GENERATION FARM WHERE EVERYONE IS INVOLVED

*We make our living in Agriculture and are very proud of it!*

**GUEST CONSIGNORS**

**SPRINGHILL FARM**  
 Bev & Krista McMurrie  
 Fredericton, New Brunswick  
 506-292-1248

**ANGUS VALLEY FARMS**  
 Bruce McRae  
 Manitoa, Manitoa  
 204-242-4502

**MCRAE LAND & LIVESTOCK**  
 Brett & Chantel McRae  
 Brandon, Manitoa  
 204-729-1018

**MC-THREE FARMS**  
 Tyson McRae  
 Brandon, Manitoa  
 204-726-3205

**STRIKER CATTLE CO.**  
 Kim & Tyler Warburton  
 Brandon, Manitoa  
 204-724-2354

We extend a heartfelt welcome for you to join us at the Mar Mac Farms 20th Anniversary Bull Sale, a remarkable milestone for the McRae family in their unwavering commitment to breeding Simmental and Angus cattle. For many decades, the McRae family has poured their passion and dedication into this noble endeavour, cultivating a legacy that reflects their keen eye for cattle and an unwavering commitment to delivering the very best. Their tireless efforts have resulted in a herd that not only meets the highest standards but also consistently produces exceptional stock that exceeds the expectations of their valued customers.

As we gather on Wednesday, March 6, at the farm just outside of Brandon, MB, we invite you to join us all on the success story of Mar Mac Farms. This anniversary celebration is not just a testament to their 20 years of dedication in bull sales but also an opportunity for you to witness firsthand the outstanding cattle that have emerged from their meticulous breeding program. We encourage you to engage with the McRae family and other consignors prior to the sale to visit about the strong offering. Additionally, the team at Bohrsen Marketing Services, represented by Nate Marin, will be in attendance to provide any assistance or information you may require to purchase your upcoming bull(s) that can take your program to the next level. Join us for a day of excellence, camaraderie, and the unparalleled quality that defines Mar Mac Farms.

Best regards,

*Bohrosen Marketing Team*



PLEASE TAKE ADVANTAGE OF OUR SIGHT UNSEEN PROGRAM  
(We can give you some suggestions for bulls that will work in your program)

WE ENCOURAGE EVERYONE TO COME ANYTIME TO TOUR THE BULL PEN.

Welcome to Mar Mac Farms 20th Anniversary Bull Sale on March 6, 2024, at the farm, just minutes out of Brandon, Manitoba. Blair, Lois, and the family offer an outstanding lineup of yearlings and two-year-olds to enhance and add value to your breeding program. They welcome guest consignors McRae Land and Livestock, Angus Valley Farm, MC-3 Farms, Spring Hill Farm, and Striker Cattle Company.

"A program you can hang your hat on". Yes, from two historic families who have helped to shape the Manitoba livestock landscape. This their 4th generation, the McRae family have been breeding pedigreed livestock for 69 years. This past year, Blair and Lois celebrated their 40th wedding anniversary and at Ag-Ex they celebrated a fifty-year anniversary for showing Red Angus at Brandon. In 2018, Mar Mac were named the CRAPS breeder of the year, the coveted Award in the Red Angus Breed.

The seedstock produced by this establishment has quite a track record over the years and the 2024 offering is set to add more history. The offering is powerful and outstanding in all the breeds whether it be Red Angus, Black Angus, or Simmentals. Rugged, hairy with lots of capacity and muscle shape and complete powerful maternal traits. Whether you are a purebred breeder looking for the next great one or a cow/calf supplier, who wants to add new genetics to add more pounds at weaning while keeping daughters in the herd. The lineup is powerful in all divisions.

Feel free to stop by the farm and preview the bulls and see the mothers or give the folks at Mar Mac a call to discuss the bulls that will fit your breeding intentions.

Plan to be with us on March 6th in person, on the phone or online. Come early, be their guest for a complementary luncheon and refreshments, it will be worth your time of day at Mar Mac. Do not hesitate to give any of us at T Bar a call as we can assist you with your purchases in a professional and confidential manner.

*Chris Poley*



1: 30 PM CST - WEDNESDAY

*March*  
2024 **6<sup>TH</sup>**

AT THE FARM  
BRANDON, MANITOBA

*Sale Day Phones*

Sale Barn 204-728-3058  
Blair Cell 204-729-5439  
Lois Cell 204-573-5192  
Brett Cell 204-729-1018  
Melissa Cell 204-573-9903  
Tyson Cell 204-726-3205

*Sale Team*

Our sale team have been out and inspected the cattle and will be happy to discuss the bulls with you. Please feel free to talk to any of our sales staff, or consignors if you have questions about the bulls or our program.

T BAR C CATTLE CO.

CHRIS POLEY 306-220-5006

BEN WRIGHT 519-374-3335

SHANE MICHELSON 403-363-9973

LEVI RIMKE 204-851-4515

BOHRSON MARKETING

NATE MARIN 306-869-7130

DLMS

MARK SHOLOGAN 780-699-5082

*Photo, Video & Catalogue Production*

Prairie Pistol Designs

[www.prairiepistoldesigns.com](http://www.prairiepistoldesigns.com)



**MAR MAC FARMS**

Blair, Lois McRae

Melissa McRae

RR 1 Box 57

Brandon, Manitoba

R7A 5Y1

H: 204-728-3058

B: 204-729-5439

L: 204-573-5192

M: 204-573-9903

[marmacfarms1@gmail.com](mailto:marmacfarms1@gmail.com)





# MAR MAC FARMS



Boehringer Ingelheim and Mar Mac Farms provide triple-assured health protection with the **EXPRESS VERIFIED<sup>®</sup> PLUS** Program.

#### EACH ANIMAL COMES WITH THREE DIFFERENT LEVELS OF PROTECTION:

- 1. EXPRESS VERIFIED<sup>®</sup> BVD Persistent Infection-free Guarantee\*** providing BVD PI free assurance that's transferable through the CCIA.
- 2. A 6-month health warranty on your Mar Mac bull.\*** If your EXPRESS VERIFIED<sup>®</sup> PLUS Mar Mac bull gets sick with any of the 5 diseases (BVD I, BVD II, IBR, BRSV or PI3) covered in the EXPRESS<sup>®</sup> FP vaccine up to 6 months after the Mar Mac sale, Boehringer Ingelheim will cover the cost of diagnostic testing and treatment, up to a maximum of \$3,500.
- 3. Finally, all Mar Mac's Black Angus, Red Angus and Simmental sale bulls are vaccinated to protect their testicles from infection with BVD virus.\*\***

FOR MORE INFORMATION ON THE EXPRESS VERIFIED<sup>®</sup> OR EXPRESS VERIFIED<sup>®</sup> PLUS CALL:

**Devin Boitson**  
(431) 294-9891

**Steve Cuddington**  
(306) 537-0417

For information on Mar Mac bulls contact: **Blair, Lois, Brett & Melissa McRae** at 204-728-3058 or [marmacfarms1@gmail.com](mailto:marmacfarms1@gmail.com).

EXPRESS<sup>®</sup> Yearling and EXPRESS<sup>®</sup> Feedlot are ineligible for the EXPRESS VERIFIED<sup>®</sup> Guarantee.

\*See full term and conditions of guarantee.

\*\*Givens MD, et al. 2009. Safety and efficacy of vaccination of seronegative bulls with modified-live, cytopathic bovine viral diarrhea viruses. *Theriogenology*. 2009 Apr 1; 71(6):975-83.

EXPRESS<sup>®</sup> and EXPRESS VERIFIED<sup>®</sup> are registered trademarks of Boehringer Ingelheim Vetmedica GmbH, used under license.

©2024 Boehringer Ingelheim Animal Health Canada Inc. All Rights Reserved.

Our 4th generation farm takes pride in what we produce for our customers



**EXPRESS VERIFIED<sup>®</sup>  
PLUS HERD.**



**Life forward**

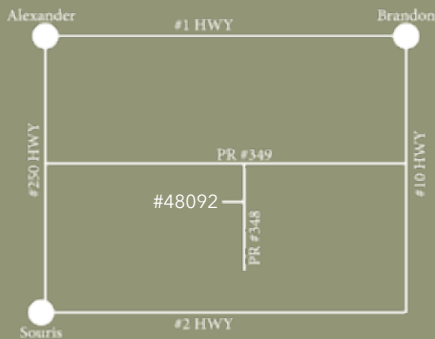
## BIRTH WEIGHT AND CALVING EASE ★★☆☆

University studies in Wyoming and data from Montana and Colorado lend credence to the following conclusions.

1. The birth weight itself influences calving ease by 65%.
2. The female has 60-70% influence on birth weight of her calf.
3. The bull has 30-40% influence on birth weight of his progeny.
4. Pelvic measurement and angle as well as the shape of the calf has 35-40% influence on calving ease.
5. Length of gestation greatly affects birth weight. A fetus can gain over one pound per day in the last days of gestation.
6. Weather and temperature the last 30 days affect the length of gestation.
7. Size and maturity of the cow influences calving ease.

Remember, everything is relative. Increased growth, frame and performance will increase BW. A longer-bodied calf will weigh more. If a calf is expected to have the genetics to growth, it will display this prior to birth as well as after. As a rule of thumb, it takes a calf weighing 85 lbs. at birth to finish at 1200-1250 lb. A cow should easily give birth to a calf weighing 8% of her own body weight. Thus a 1200 lb cow should give birth to a 96 lb calf with ease.

Continued selection for light birth weights will ultimately reduce the mature sizes and performance of your cattle.



GOOGLE MAPS  
MAR MAC FARMS

Directions:  
6 miles south of Brandon  
on #10 HWY,  
to PR Rd #349,  
go 4 miles west  
to PR Rd #348  
Go South 1.5 miles  
lane is on west side of road

## ONLINE BIDDING ON DLMS.CA

Take time and register early.

## CAN'T MAKE THE SALE? Watch, Bid & Buy Online

To view & bid visit [www.dlms.ca](http://www.dlms.ca), log-in with your username and password or sign-up for your free user account.

**BIDDERS** - click BUYER APPROVAL tab, select the sale you are interested in bidding at and click sign up.

For more information call:

Mark Shologan 780-699-5082 or Purebred Team 780-991-3025

DLMS  
[www.dlms.ca](http://www.dlms.ca)  
Direct Livestock Marketing Systems



CANADA'S ONLINE SEEDSTOCK SOURCE.

## ABOUT THE BULLS

This crop of bull calves has been one to admire for the uniformity and depth of quality in all 3 divisions. As you toured through the pastures admiring what the mother cows had produced you get a sense of pride of the cow herd you have worked hard to establish. As you will see in the footnotes many strong cow families have been established in our herd and work well every year. Our cowherd grazed most of the winter on corn grazing and bales till calving season. Once they are brought home to a silage, hay, and straw mixture.

When we select a herd sire, the bull's mother or grandmother is an important part of our selection. Stop by anytime to view the dams of the Red Angus and Simmental bulls, we are very proud of the cowherd we have assembled. We have spent long hours researching our herd bull battery and are very proud of bulls we have added to our program. This year in the Red Angus, and Simmental, you will find power bulls for your cows, and heifer bulls for those ease of calving individuals. 98% of our calves are born unassisted we feel mainly due to our cowherd being fed out in paddocks with lots of exercise, blended rations, and bull selection.

Remember we get paid by the pound for our calves and length of body adds pounds. Mar Mac has tried hard to keep that length and natural thickness in all of their divisions.

In this year's catalog, you will see the calf's actual birth weight and what it was as a % of his dam's weight at weaning. It is assumed that most cows will calve 7% of their body weight. The average of these bulls % is 6.08%.

Birth weights are taken within 12 hours of birth, where we vaccinate, tag, and tattoo each calf.

Our calves are not creep fed in the summer, so we can evaluate the full potential of the cowherd. Two weeks before weaning, a feeder with an oat pellet ration is put in the field to get the bulls used to eating away from their mothers. Then one week before weaning, the low stress quiet weans are put in. Calves are returned to the pasture with their mothers for 5 days. At the time of the nose wean insertion, fall booster vaccines are administered. Deworming and parasite control are administered in mid October.

Weaning day, the bulls are weighed, brought home and started on a TMR ration of corn silage, hay, grain and supplement that has been balanced and formulated for longevity and fertility. In early January the bulls were vaccinated with Express 5.

These sale bulls have been through a strict culling process with structural soundness, ease of fleshing, and disposition taken into consideration. Any of the bulls in the sale, we would use in our program.

WE WOULD LIKE TO RETAIN THE RIGHT TO COLLECT 200 STRAWS OF SEMEN FOR IN HERD USE, AT BUYERS CONVENIENCE AND SELLERS EXPENSE, ON ANY OF THE BULLS IN THE SALE.

Customer Service is very important; we talk to our buyers at least once during the year to see how the bulls are doing. If you have a problem with your bull, we expect you to call and talk to us.

## CALVING EASE SCORE...

We evaluate each bull for calving ease determined by bone size, birth weight, birth weight EPD and profile. Scoring is as follows:

- ★★★ Recommended for use on moderate framed first calf heifers
- ★★ Recommended for use on well developed first calf heifers under supervision & cows.
- ★ Recommended for use on cows.

This system is just a suggestion, many other factors affect calving ease.

# red angus reference sires



**RED BLAIR'S NAVIGATOR 37E - 2016094 - BBC 37E**



**RED MOOSE CREEK RIPZONE - 1943154 - CDI 89D**



**RED MAR MAC LINCOLN 106H - 2141405 - KOF 106H**



**RED MRLA ADMIRATION 29J - 2193501 - MRLA 29J**

*son* RED GCC NAVIGATOR 1233     *dam* S A V RESOURCE 1441  
**RED BLAIR'S NAVIGATOR 37E**     **MAR MAC SIERA 12 (RC)**  
 RED BLAIRS FANNY 87Z     RED MCRAE'S SIERA 38U  
 CE: 6.0    BW: 1.1    WW: 44    YW: 81    M: 19    MCE: 7.0

One of the first Navigator Sons to sell in our sale, topping the 2021 Sale at \$30,000 to Six Mile Ranch and MC Quantock Ranching.

Lincoln has worked extremely well in our program too with the Top Selling Red Angus in our Mar Mac Farms New Generation Female Sale selling for \$10,500 to Brad Koivisto, MN. His first son to sell at Mar Mac Topped our bull sale at \$15,000 to Double F Cattle Co., SK.

Lincoln is just starting to be a name respected in the industry for the offspring he has produced. Check out his sons in this sale.

*son* RED U2 RETROSPECT 29E     *dam* RED U-2 RENOWN 193C  
**RED MRLA RESPECT 42G**     **RED MRLA MISS 7379E**  
 MRLA MISS 4408B     RED MRLA MISS 788W  
 CE: -6.0    BW: 5.6    WW: 49    YW: 78    M: 23    MCE: 0.0

In our search for a power sire, we came across Admiration. We viewed Admiration's mother and grandmother at McMillen's and that was a true selling point for us. Our mouths watered when you saw these two females; picture perfect udders well balanced broody females. Another selling feature, we admired the excellent dark foot on Admiration. We are really excited for the power, thickness and structural soundness in the Admiration offspring. His sons are going to be exciting additions.



**RED COCKBURN SIMPLIFY 1104 - 2245233 - CWJ 104J**

RED RREDS SENECA 731C     *dam* RED PIE SPECIALIST 430  
**RED RREDS COPPER G929**     **RED COCKBURN CORA 8057**  
 RED RREDS LANA 306A     RED COCKBURN CORA 549X  
 CE: 11.0    BW: -2.0    WW: 35    YW: 66    M: 26    MCE: 10.0

This exciting young sire was selected to be our calving ease bull. You have to admire his phenotype. His dam goes back to the Cockburn Cora family who have been top producing cattle in the Red Angus breed. This is his first set of sons to sell, they have impressive calving ease birth weights, strong quarters and style. Simplify has an exciting future ahead as a heifer pen herd sire that keeps the performance in your calves. We are impressed with the results he has presented us with.

**RED ANGUS BREED AVERAGE EPDS**

CE: -2.4    BW: 1.3    WW: 41    YW: 71    M: 25    MCE: 5.5



lot 1

**- RED MAR MAC LEADER 40L -**

2312374 KOF 48L JAN 31 2023 PARENT VERIFIED

1

★★★  
calving ease

*sire* RED BLAIR'S NAVIGATOR 37E  
RED MAR MAC LINCOLN 106H  
MAR MAC SIERA 12B

*dam* RED FLYING K NEPTUNE 28Z  
MAR MAC HEATHER 14D (RC)  
ANDERSON'S HEATHER 33X (RC)

**BW: 74 LBS JAN 4 WT: 1114 LBS BW% OF DAM: 4.97%**  
CE: 7.0 BW: 0.0 WW: 45 YW: 73 M: 21 MCE: 9

Lincoln's progeny never let you down adding performance and calving ease to his progeny.

Leader's dam is a solid producing Neptune female. The Neptune females are tight uddered, mother cows that bring in the stout calves in the fall. His mother is an easy keeping female.

Here is calving ease along with top EPD percentages in Weaning Weight and Yearling Weight.

Leader catches your eye with his volume and length of body. Take a look here some unique genetics.

- RED ANGUS -

*We are excited about Leader's future!*





Like his father here is a dark cherry, moderate frame, thick meaty, son of Red Mar Mac Lincoln 106H that will work in the heifer pen or on a set of females to add paternal and maternal strength. His dam has 2 daughters in the herd and is proving to be a consistent producing *Fanny Cow Family* female with a neat tidy udder.

Proven genetics here that are an exciting combination of outcross pedigrees. A young sire with lots of potential.

lot 2



FULL SIB - FANNY 42K

- RED ANGUS -

**- RED MAR MAC GENERAL 48L -**

2312374 KOF 48L JAN 31 2023 PARENT VERIFIED

2

★★★★  
calving ease

*sire* RED BLAIR'S NAVIGATOR 37E  
RED MAR MAC LINCOLN 106H  
MAR MAC SIERA 12B

*dam* RED BRIDGEWAY RIDDLER 9D  
MAR MAC FANNY 72G  
MAR MAC FANNY 96E

BW: 74 LBS JAN 4 WT: 1000 LBS BW% OF DAM: 5.27%  
CE: 7.0 BW: 0.0 WW: 45 YW: 73 M: 21 MCE: 9

**- RED MAR MAC ADMIRAL 56L -**

2312314 KOF 56L FEB 02 2023 PARENT VERIFIED

3

★★★  
calving ease

*sire* RED MRLA RESPECT 42G  
RED MRLA ADMIRATION 29J  
RED MRLA MISS 7379E

*dam* RED BIEBER ROUGH RIDER 10712  
RED MAR MAC FRADO 65Y  
RED MCRAE'S FRADO 53J

BW: 92 LBS JAN 4 WT: 1064 LBS BW% OF DAM: 5.27%  
CE: -2.0 BW: 3.7 WW: 42 YW: 65 M: 23 MCE: 2

This Admiration son catches your eye every time you enter the pen.

Admiral is meaty and solid made. He is sure to add some length and performance to your calf crop.

Every good herd bull is backed up by the powerful *Frado Cow Family*, a foundation family at Mar Mac. Females out of the Frado Cow Family sold to Brad Koivisto and Tibbett Cattle Co. in our New Generation Female Sale.



lot 3



GRAND DAM - FRADO 53J





**- RED MAR MAC LEGACY 121L -**

2312366 KOF 121L FEB 19 2023 PARENT VERIFIED

**4**  
*calving ease*

*sire* RED MRLA RESPECT 42G  
 RED MRLA ADMIRATION 29J  
 RED MRLA MISS 7379E

*dam* RED MAR MAC TOP SECRET 28D  
 RED LONE STONE KELSEY 585F  
 RED LONE STONE KELSEY 85C

**BW: 88 LBS JAN 4 WT: 976 LBS BW% OF DAM: 6.43%**  
 CE: 0.0 BW: 2.7 WW: 53 YW: 86 M: 22 MCE: 4

**Reserve Intermediate Bull Calf** at Canadian National Angus Show, Ag Ex 2023 and member of the Premier Breeder and Premier Exhibitor show string for Mar Mac Farms.

A mid February bull that will be exciting to watch develop. He is as structurally correct as you will find with a thick quarter and smooth front end.

His dam is a daughter of Red Mar Mac Top Secret 28D we sold to the good folks at Lonestone Farms. We purchased *Kelsey Cow Family* - 585F in their annual production sale and boy has she made a mark at Mar Mac. She has a son working at Walsh Farms, daughter in the herd and daughter in the Louis and Aaron Bujold program.



**HALF SIB - KOF 131K**



**MAT GRAND SIRE - KOF 28D**

**- RED ANGUS -**





lot 5

**- RED MAR MAC CAPTAIN 26L -**

2312382 KOF 26L JAN 27 2023 PARENT VERIFIED

5

★★  
*calving ease*

*gen* RED MRLA RESPECT 42G  
**RED MRLA ADMIRATION 29J**  
RED MRLA MISS 7379E

*dam* RED LAURON FLEETWOOD 152F  
**RED LAURON ARDATH 33H**  
RED LAURON JILL 34C

**BW: 74 LBS JAN 4 WT: 1022 LBS BW% OF DAM: 5.78%**

CE: 3.0 BW: 1.7 WW: 42 YW: 68 M: 27 MCE: 7



LOT 5 & DAM - 33H

- RED ANGUS -

Dark cherry red, powerful Admission son. He came with a lower birth weight but is loaded with power.

His dam we purchased at Red Roundup from Lauron Red Angus and boy this moderate framed, heavy milking female has done a great job. She has had two bull calves; Captain and last year her son sold to Belle Plaine Colony.

*Predictability bred right into this beef bull. Pounds + \$\$\$\$ in your pocket.*





A power bull that goes back to the *Bonita Cow Family*. His dam, 9H is a productive, feminine made female.

Lots of proven genetics with Bonita and Admiration.

Take a second look at this guy.



DAM - BONITA 9H

**- RED MAR MAC BARGE 21L -**

2312379 KOF 21L JAN 26 2023 PARENT VERIFIED

**6**  
★  
*calving ease*

*sire* RED MRLA RESPECT 42G  
RED MRLA ADMIRATION 29J  
RED MRLA MISS 7379E

*dam* RED PEAK DOT ELIMINATOR 596C  
RED MAR MAC BONITA 9H  
RED MAR MAC BONITA 143F

BW: 90 LBS JAN 4 WT: 1036 LBS BW% OF DAM: 6.98%  
CE: -5.0 BW: 4.3 WW: 53 YW: 87 M: 27 MCE: 1

**- RED MAR MAC ADMIRAL 68L -**

2312373 KOF 68L FEB 05 2023 SIRE VERIFIED

**7**  
★★  
*calving ease*

*sire* RED MRLA RESPECT 42G  
RED MRLA ADMIRATION 29J  
RED MRLA MISS 7379E

*dam* RED MOOSE CREEK RIPZONE 89D  
RED MAR MAC KATIE 70G  
RED MCRAE'S KATIE 63W

BW: 84 LBS JAN 4 WT: 940 LBS BW% OF DAM: 5.83%  
CE: 0.0 BW: 2.1 WW: 40 YW: 65 M: 25 MCE: 3

- RED ANGUS -

A dark red performance, Admiration son out of a solid made Ripzone female that goes back to the *Katie and Frado Cow Family*.

These Admiration sons are like peas in a pod.

**7**





lot 8

HALF SIB - FRADO 77K

**- RED MAR MAC LIEUTENANT 91L -**

2312377 KOF 91L FEB 11 2023 PARENT VERIFIED

8  
★  
calving ease

*sire* RED MRLA RESPECT 42G  
**RED MRLA ADMIRATION 29J**  
RED MRLA MISS 7379E

*dam* RED MOOSE CREEK RIPZONE 89D  
**RED MAR MAC FRADO 132G**  
RED MAR MAC FRADO 23D

**BW: 92 LBS JAN 4 WT: 1000 LBS BW% OF DAM: 6.47%**  
CE: -7.0 BW: 4.8 WW: 48 YW: 81 M: 26 MCE: 1

Performance and maternal strength in this young sire.

An Admiration son who is a half brother to the high selling Red Angus female in our New Generation Female Sale to Brad Koivisto for \$10,500. His dam is a Red Moose Creek Ripzone female that never lets us down, going back to the *Frado Cow Family*. Ripzone females are good footed, tight uddered females that have been great assets to our Mar Mac Red Angus program.

*An exciting herdsire prospect*

**- RED MAR MAC LESLIE 51L -**

2312393 KOF 51L FEB 01 2023 PARENT VERIFIED

9  
★★  
calving ease

*sire* RED MRLA RESPECT 42G  
**RED MRLA ADMIRATION 29J**  
RED MRLA MISS 7379E

*dam* RED 3SCC DOMAIN A163  
**RED MAR MAC RUBY 51J**  
RED MAR MAC RUBY 24D

**BW: 80 LBS JAN 4 WT: 921 LBS BW% OF DAM: 6.40%**  
CE: 0.0 BW: 3.1 WW: 47 YW: 79 M: 26 MCE: 3

Dam of Leslie goes back to the *Ruby 10T Cow Family*. Here is an opportunity to add some true maternal strength with Ruby and Admiration's dam, strong proven females.

**- RED MAR MAC LEVI 66L -**

2312388 KOF 66L FEB 05 2023 SIRE VERIFIED

10  
★★  
calving ease

*sire* RED MRLA RESPECT 42G  
**RED MRLA ADMIRATION 29J**  
RED MRLA MISS 7379E

*dam* RED WINDY HILL ZEPPELIN 1240Z  
**RED MAR MAC REBA LEE 8J**  
RED MAR MAC REBA LEE 89G

**BW: 88 LBS JAN 4 WT: 865 LBS BW% OF DAM: 7.46%**  
CE: -7.0 BW: 5.6 WW: 55 YW: 93 M: 24 MCE: 1

A first calf heifer's bull calf out of the *Reba Lee Cow Family*. This bull should add length of body to your calf crop.

- RED ANGUS -



lot  
11

**- RED MAR MAC LAWRENCE 167L -**

2312898 KOF 167L MAR 24 2023 PARENT VERIFIED

11

★  
calving ease

*sire* RED MRLA RESPECT 42G  
**RED MRLA ADMIRATION 29J**  
RED MRLA MISS 7379E

*dam* RED 3SCC DOMAIN A163  
**RED MAR MAC RUBY 65J**  
RED MAR MAC RUBY 24D

**BW: 90 LBS JAN 4 WT: 800 LBS BW% OF DAM: 7.89%**  
CE: -4.0 BW: 4.7 WW: 49 YW: 85 M: 26 MCE: 1

Just an end of March bull. In the top 20% for Weaning Weight and Yearling Weight EPD's. Backed by the *Ruby Cow Family*.

*Admiration sons are  
like peas in a pod*

**- RED MAR MAC LAWSON 101L -**

2312372 KOF 101L FEB 13 2023 PARENT VERIFIED

12

★  
calving ease

*sire* RED MRLA RESPECT 42G  
**RED MRLA ADMIRATION 29J**  
RED MRLA MISS 7379E

*dam* RED MAR MAC DEBUT 70D  
**RED MAR MAC FRADO 29G**  
RED MAR MAC FRADO 98C

**BW: 100 LBS JAN 4 WT: 933 LBS BW% OF DAM: 7.09%**  
CE: -7.0 BW: 5.1 WW: 42 YW: 68 M: 25 MCE: -2

Add length to your calf crop with this sire. His dam is a beautiful Red Mar Mac Debut 70D daughter. Debut was sold to Shiloh Cattle Company and has left a strong set of females. *Frado and Ruby Cow Family* lots of maternal strength here.

**- RED MAR MAC LEDGER 118L -**

2312359 KOF 118L FEB 18 2023 PARENT VERIFIED

14

★  
calving ease

*sire* RED MRLA RESPECT 42G  
**RED MRLA ADMIRATION 29J**  
RED MRLA MISS 7379E

*dam* RED MOOSE CREEK RIPZONE 89D  
**RED MAR MAC EASTER 136F**  
RED MAR MAC EASTER 164A

**BW: 102 LBS JAN 4 WT: 1005 LBS BW% OF DAM: 6.67%**  
CE: -9.0 BW: 5.5 WW: 50 YW: 84 M: 26 MCE: -2

Ledger will be a young bull to add pounds to the calf crop for more profit on your calves.

- RED ANGUS -



**- RED MAR MAC DM PAYWEIGHT 18L -**

2332342 KOF 18L JAN 25 2023 PARENT VERIFIED

- RED ANGUS -

**15**

★★★  
*coliving ease*

*sire*  
RED PELTON WIDELOAD 78B  
**RED RAML PAYLOAD 9500**  
RED RAML CHEROKEE MAIDEN 500

*dam*  
RED COCKBURN RIBEYE 346U  
**RED MAR MAC LADY TROOPER 114Z**  
RED SUNSET RIDGE TROOPER 10T

**BW: 82 LBS JAN 4 WT: 1180 LBS BW% OF DAM: 5.47%**  
CE: 1.5 BW: 1.8 WW: 54 YW: 91 M: 27 MCE: 9

Payweight was second in class at the Canadian National Red Angus Show at Ag Ex 2023.

A direct son of the Foundation female  
*Red Mar Mac Lady Trooper 114Z.*

A performance bull with length of body to add some added weigh to his offspring. This is the second set of Payweight calves and we are impressed with their smooth fronts and extreme body length.



*Thanks to last year's bull buyers*

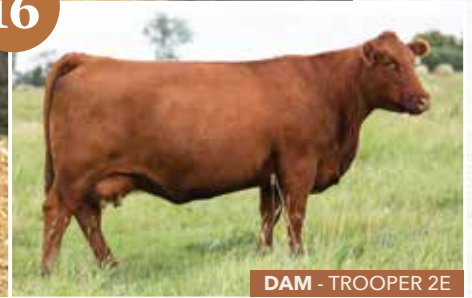
4R Ranch, ND  
Colin Adams, MB  
BK Cattle Co., MB  
Belle Plaine Colony, MB  
Brightstone Colony, MB  
Steve and Katie Cowan, SK  
Bruce Curle, MB  
Dayholos Farm, MB (2)  
Double F Cattle Co, SK (High Seller)  
Bob Elliott, MB (2)  
Evening Star, MB  
Ferme Baker, QC  
Ron Friesen, MB  
Gamache Farms, MB  
Ghost Rider Cattle Co., AB  
Ron Goetzen, MB

Hebert Livestock Ventures, SK (2)  
Holmfield Colony, MB  
Derek Issac, MB  
Jameson Rolling Lane Farms Ltd., MB  
Luhowy Farms Inc., MB  
Mannville Farms Ltd., AB  
Ian and Donna McKay, MB  
Darrell Peterson, SK  
Jason Potter, MB  
Ken Miller, MB  
Cody Milliken, MB  
Chris Moore, MB  
C+C Pyziak, MB  
Jared Preston, MB  
Rocking G Ranch, MB  
Troy Reynolds, MB

Right Cross Ranch, SK  
Sand Hills Cattle, MB  
Scott Bros, MB (2)  
Jay Sprott, MB  
Blaine Stockwell, MB  
Skyview Farms, MB  
Terry Sliworsky, MB  
Stone Ridge Ranch, MB  
Twin Willow Farms, MB  
Blaine & Hillary Van Damme, MB (4)  
Vegreville Colony, AB  
Keegan and Michelle Vinck, MB  
Woychyshyn Farms, MB  
Miguel Wytinck, MB  
Wright Creek Farms, MB  
Dirk Van Velthuizen, MB



lot  
16



DAM - TROOPER 2E

**16 - RED MAR MAC DM ENERGIZE 4L -**  
2312379 KOF 10K 18/01/2022 PARENT VERIFIED

★★  
calving ease

**BW: 78 LBS JAN 4 WT: 1100 LBS BW% OF DAM: 5.16%**  
CE: 2.5 BW: 1.8 WW: 55 YW: 92 M: 28 MCE: 9

**17 - RED MAR MAC DM WRANGLER 38L -**  
2332254 KOF 38L JAN 29 2023 PARENT VERIFIED

★  
calving ease

**BW: 94 LBS JAN 4 WT: 1044 LBS BW% OF DAM: 6.31%**  
CE: 2.5 BW: 2.5 WW: 55 YW: 92 M: 27 MCE: 9

gen RED ROJAS RIOJA 6052  
**RED DUFF RED BLOOD 18114**  
DUFF JUANADA 927K 15124

dam RED FINE LINE MULBERRY 26P  
**RED BRYLOR LADY TROOPER 2E**  
RED MAR MAC LADY TROOPER 114Z

These two full brothers are the result of the mating with the 2023 Canadian Angus Elite Cow, Red Brylor Lady Trooper 2E. 2E is a direct daughter of Lady Trooper 114Z who we have sold sons to the progressive cattle producers: Lauron Red Angus, Troy Kitz, Jay Sprott, and Cody Milliken. 2E produces herd bulls with add length of body performance with added volume and doing ability. You will drive along way to find two young sires that are full of potential like these two.

- RED ANGUS -



lot  
17



DAM - TROOPER 114Z

**- RED MAR MAC DM TEMPLATE 2L -**  
2332277 KOF 2L JAN 17 2023 PARENT VERIFIED

**18**  
★★  
*calving ease*

*sin* RED COMPASS MULBERRY 449M  
**RED FINE LINE MULBERRY 26P**  
RED DUS FAYETTE 8G  
*dam* RED COCKBURN RIBEYE 346U  
**RED MAR MAC LADY TROOPER 114Z**  
RED SUNSET RIDGE TROOPER 10T

**BW: 84 LBS JAN 4 WT: 1080 LBS BW% OF DAM: 6.50%**  
CE: 1.0 BW: 2.7 WW: 49 YW: 86 M: 25 MCE: 10

Mulberry and Trooper all wrapped up in one package.

**- RED MAR MAC ZONE 17L -**

2312327 KOF 17L JAN 24 2023 PARENT VERIFIED

**19**  
★★  
*calving ease*

*sin* RED SOO LINE CASH 9161  
**RED MOOSE CREEK RIPZONE 89D**  
RED MOOSE CREEK LAUREL 79A  
*dam* RED NCJ MYSTIFIED 16X  
**RED K F DYANI 34A**  
RED K F DYANI 34X MAF

**BW: 74 LBS JAN 4 WT: 913 LBS BW% OF DAM: 4.50%**  
CE: 2.0 BW: 0.4 WW: 41 YW: 64 M: 28 MCE: 3

There is only two Ripzone sons in the sale this year as he has been used so heavily in our program. Red Moose Creek Ripzone leaves beef bulls and females with tight udders that wean off top calves.

Dynani was purchased out of the Blake Dispersal and what a job she has done here. Her daughter sold for \$7750 in our female sale to The Oulton Family, Nova Scotia.

A Ripzone son that needs a second look.

- RED ANGUS -



HALF SIB - KOF 127K

lot  
**19**



## - RED MAR MAC DEFENCE 78L -

2312329 KOF 78L FEB 08 2023 -

# 20

★  
calving ease

*sire* RED MOOSE CREEK RIPZONE 89D  
RED MAR MAC POWER PLAY 168H  
RED MAR MAC RUBY 24Y

*dam* RED MAR MAC SPARTAN 81A  
RED MAR MAC FRADO 98C  
RED MAR MAC FRADO 65Y

**BW: 94 LBS JAN 4 WT: 920 LBS BW% OF DAM: 6.26%**

CE: -5.0 BW: 4.4 WW: 55 YW: 96 M: 27 MCE: 1

Power Play sold in our 2021 Sale to Allison Farms, Alberta. His daughter was the High Selling Heifer Calf at Red Roundup 50th Anniversary Sale in 2022.

An interesting pedigree with Ripzone, Ribeye, Ruby 10T, Frado. The opportunities are endless in this dark cherry red bull.



## - RED MAR MAC LANCE 82L -

2312313 KOF 82L FEB 08 2023 PARENT VERIFIED

# 21

★★  
calving ease

*sire* RED SOO LINE CASH 9161  
RED MOOSE CREEK RIPZONE 89D  
RED MOOSE CREEK LAUREL 79A

*dam* RED MCRAE'S MISSION 71W  
RED MAR MAC REBECCA 100Z  
RED BUCK VALLEY REBECCA 34S

**BW: 80 LBS JAN 4 WT: 996 LBS BW% OF DAM: 5.00%**

CE: 2.0 BW: 0.7 WW: 45 YW: 73 M: 29 MCE: 3

100Z has been a solid productive female in our program and the *Rebecca Cow Family*. Lance's half sister was our entry in Red Round Up and Sold to Bar LA Farm, Alberta for \$8000. Proven Maternal and paternal pedigree with Lance.



## - RED MAR MAC NOLAN 97L -

2312378 KOF 97L FEB 12 2023 PARENT VERIFIED

# 22

★★  
calving ease

*sire* RED GCC NAVIGATOR 1233  
RED BLAIR'S NAVIGATOR 37E  
RED BLAIRS FANNY 87Z

*dam* RED SSS AMBUSH 771X  
RED BLAIR'S NOLEN 6H  
RED RX LADY NOLEN Y114

**BW: 88 LBS JAN 4 WT: 878 LBS BW% OF DAM: 5.51%**

CE: -1.0 BW: 3.1 WW: 45 YW: 76 M: 22 MCE: 5

Red Blair's Navigator has been a real asset to our program. His sons and daughters have gone out and worked in the purebred and commercial industry.





**- RED MAR MAC LIBERTY 39L -**

2312390 KOF 39L JAN 30 2023 SIRE VERIFIED

**23**

★★★  
calving ease

*sire* RED RREDS COPPER G929  
**RED COCKBURN SIMPLIFY 1104**  
RED COCKBURN CORA 8057

*dam* RED MOOSE CREEK RIPZONE 89D  
**RED MAR MAC FRADO 140J**  
RED MAR MAC FRADO 4F

**BW: 72 LBS JAN 4 WT: 890 LBS BW% OF DAM: 7.04%**  
CE: 7.0 BW: -0.7 WW: 35 YW: 65 M: 25 MCE: 8

*Frado Cow Family* out of a Ripzone dark cherry red 2 year old female.

lot  
**23**

*calving ease*



**- RED MAR MAC FRASER 62L -**

2312395 KOF 62L FEB 04 2023 SIRE VERIFIED

**24**

★★★  
calving ease

*sire* RED RREDS COPPER G929  
**RED COCKBURN SIMPLIFY 1104**  
RED COCKBURN CORA 8057

*dam* MRLA RESOURCE 23F  
**RED FRASER RUBY 185J**  
RED MAR MAC RUBY 8B

**BW: 74 LBS JAN 4 WT: 880 LBS BW% OF DAM: 6.49%**  
CE: 9.0 BW: -0.7 WW: 38 YW: 68 M: 23 MCE: 9

A Resource dam purchased from Fraser Farms.

lot  
**24**

*heifer bulls*



**- RED MAR MAC LINK 87L -**

2312391 KOF 87L FEB 09 2023 -

**25**

★★★  
calving ease

*sire* RED RREDS COPPER G929  
**RED COCKBURN SIMPLIFY 1104**  
RED COCKBURN CORA 8057

*dam* RED 3SCC DOMAIN A163  
**RED MAR MAC RUBY 49J**  
RED MAR MAC RUBY 24D

**BW: 76 LBS JAN 4 WT: 940 LBS BW% OF DAM: 7.45%**  
CE: 7.0 BW: -0.1 WW: 41 YW: 75 M: 27 MCE: 7

Calving ease Domain sire on this *Ruby Cow Family* 2 year old.

lot  
**25**

**- RED MAR MAC LAYTON 75L -**  
2312383 KOF 75L FEB 07 2023 SIRE VERIFIED

**26**

★★★  
*calving ease*

*sire* RED RREDS COPPER G929  
**RED COCKBURN SIMPLIFY 1104**  
RED COCKBURN CORA 8057  
*dams* RED MAR MAC MARSHALL 21F  
**MAR MAC TARA 126H**  
MAR MAC TARA 150Z

**BW: 82 LBS JAN 4 WT: 835 LBS BW% OF DAM: 6.09%**  
CE: 6.0 BW: -0.1 WW: 34 YW: 61 M: 25 MCE: 6

Dam is a daughter of Red Mar Mac Marshall, member of the *Bonita Cow Family*.

**- RED MAR MAC LEO 92L -**  
2312881 KOF 92L FEB 11 2023 SIRE VERIFIED

**28**

★★★  
*calving ease*

*sire* RED RREDS COPPER G929  
**RED COCKBURN SIMPLIFY 1104**  
RED COCKBURN CORA 8057  
*dams* RED BLAIR'S NAVIGATOR 37E  
**RED MAR MAC REBECCA 192J**  
RED MAR MAC REBECCA 100Z

**BW: 66 LBS JAN 4 WT: 960 LBS BW% OF DAM: 6.60%**  
CE: 11.0 BW: -2.2 WW: 42 YW: 69 M: 26 MCE: 10

This bull was almost as big as his 2 year old Navigator - *Rebecca Cow Family* daughter. She really worked hard on this bull calf.

**- RED MAR MAC LANCE 98L -**  
2312389 KOF 98L FEB 12 2023 PARENT VERIFIED

**27**

★★★  
*calving ease*

*sire* RED RREDS COPPER G929  
**RED COCKBURN SIMPLIFY 1104**  
RED COCKBURN CORA 8057  
*dams* RED MAR MAC FOOTPRINT 164F  
**RED MAR MAC TARA 11J**  
RED MAR MAC TARA 5B

**W: 70 LBS JAN 4 WT: 805 LBS BW% OF DAM: 5.52%**  
CE: 9.0 BW: -1.3 WW: 39 YW: 68 M: 26 MCE: 8

Grandson of a Ripzone 2 year old from the *Tara Cow Family*.



**- RED ANGUS CALVING EASE -**



28



- RED ANGUS CALVING EASE -

**- RED MAR MAC LEWIS 125L -**

2312886 KOF 125L FEB 20 2023 SIRE VERIFIED

**29**

★★★  
*calving ease*

*sire* RED RREDS COPPER G929  
RED COCKBURN SIMPLIFY 1104  
RED COCKBURN CORA 8057

*dam* RED MAR MAC DM TROOPER 39G  
RED MAR MAC SIERA 114J  
RED MAR MAC SIERA 127G

**BW: 92 LBS JAN 4 WT: 890 LBS BW% OF DAM: 7.39%**  
CE: -2.0 BW: 3.7 WW: 48 YW: 87 M: 26 MCE: 4

Siera cow family and dam sired by Red Mar Mac DM Trooper 39G working at Lauron Red Angus .

**- RED MAR MAC LEGEND 132L -**

2331205 KOF 132L FEB 23 2023 SIRE VERIFIED

**31**

★★★  
*calving ease*

*sire* RED BRYLOR OTM FRANCHISE 149F  
RED MAVV JOEL 55J  
WRAZ RC LADY LYN 79G

*dam* RED JIL LEGEND 83G  
RED WRAZ JESSIE 176J  
RED WRAZ JESSIE 83G

**BW: 82 LBS JAN 4 WT: 862 LBS BW% OF DAM: 6.94%**  
CE: -3.0 BW: 3.7 WW: 54 YW: 93 M: 27 MCE: 4

Franchise, Mulberry, Kargo in his background, along with one of the top bred heifers in the WRAZ Dispersal that Melissa purchased.

**- RED MAR MAC LOUIE 133L -**

2312889 KOF 133L FEB 23 2023 SIRE VERIFIED

**30**

★★★  
*calving ease*

*sire* RED RREDS COPPER G929  
RED COCKBURN SIMPLIFY 1104  
RED COCKBURN CORA 8057

*dam* MRLA 141E  
RED WATSON LADY WREN 195J  
WATSON LADY WREN 5131C

**BW: 80 LBS JAN 4 WT: 820 LBS BW% OF DAM: 7.02%**  
CE: 7.0 BW: 0.3 WW: 38 YW: 69 M: 25 MCE: 9

An outcross dam selected at Red Round Up from Watson Family.

**- RED MAR MAC FRANCHISE 162L -**

2321859 KOF 162L MAR 16 2023 SIRE VERIFIED

**32**

★★★  
*calving ease*

*sire* RED 9 MILE FRANCHISE 6305  
RED BRYLOR OTM FRANCHISE 149F  
RED BRYLOR OTHC REBA 49D

*dam* RED WRAZ PHANTOM 12B  
RED WRAZ MISTRESS 3G  
RED WRAZ MISTRESS 91W

**BW: 80 LBS JAN 4 WT: 816 LBS BW% OF DAM: 5.52%**  
CE: 5.0 BW: 0.7 WW: 42 YW: 78 M: 26 MCE: 8

3G was one of our top picks in the WRAZ Red Angus Dispersal, a feminine good milking female. Mid March calf.

**- RED MAR MAC LYLE 65L -**

2312396 KOF 65L FEB 5 2023 PARENT VERIFIED

**33**

*calving ease*

*sire* RED RREDS COPPER G929  
**RED COCKBURN SIMPLIFY 1104**  
 RED COCKBURN CORA 8057

*dam* RED 3SCC DOMAIN A163  
**RED MAR MAC RUBY 35J**  
 RED MAR MAC RUBY 24D

**BW: 70 LBS JAN 4 WT: 980 LBS BW% OF DAM: -%**  
 CE: 9.0 BW: -1.1 WW: 38 YW: 71 M: 27 MCE: 8

Simplify - Domain bred in calving ease.



lot  
**33**

**CHECK OUT THE TWO YEAR OLD  
 RED ANGUS BULL - LOT 64**

30+ BULL CLUB  
 Jay Sprott, MB  
 Thank you to your  
 continued support  
 in our program



**MAR MAC CATTLE  
 AT WORK!**

This female 2nd in class at the  
 2023 World Angus Forum in  
 Czech Republic.  
 She was an embryo going back  
 to our 2018 High Selling Female  
 Red Mar Mac Bonita  
 sold to Maya Angus  
 Airdrie, AB

2023 Volume  
 Blaine & Hillary Van Damme  
 and Family, MB  
 Thank you to your  
 continued support  
 in our program





**SPRINGHILL FARM KRISTA 506.470.8067 - BEV 506.292.1248**

We are very excited to be back for our second year as guest consignors at the Mar Mac & Guest Bull Sale. The McRae team at Mac Mac did an excellent job developing our well received bulls in 2023 and we thank them for their professionalism and wonderful friendship. We deeply appreciate the bidders and buyers who took the time to inquire and purchase our bulls on offer. We wish you much success!

For 3 generations now the McMurtrie family have been farming at Springhill in picturesque Fredericton NB. We are committed to developing and providing moderate, trait balanced genetics that will instill confidence and reliability. Our cows are efficient, easy calving, maternally minded females that need to demonstrate overall soundness and quality foot structure in order to thrive in their environment - just ask anyone who has tackled the 'Hill' to see the herd!

With a hefty haul of heifer calves in 2023 we have only a handful of bulls on offer to the public. Limited in number but by no means in quality, you will find solid dependable future herd sires in this group. Here's to more bulls in 2024!



lot  
**34**



**GRANDDAM - TAYLOR MADE**

**- RED SPRINGHILL MOSSY OAK 4L -**

2317895 SHF 4L JAN 04 2023 PARENT VERIFIED

**34**

★★★★  
*calving ease*

*sire* RED SIX MILE JOHN WICK 882E  
**RED SIX MILE MOSSY OAK 175H**  
RED SIX MILE MISS LARK 225E

*dam* RED WFL MERLIN 018A  
**RED SPRINGHILL TAYLOR MADE 8J**  
RED SPRINGHILL TAYLOR MADE

We couldn't be more pleased with this heifer's first calf. 4L puts it all together on every level. This stylish dark red bull is all about balance. You'll find it in his phenotype, in his temperament, in his pedigree and EPDs. Take a really good look - He will bring a lot of everything to your program.

**BW: 77 LBS JAN 4 WT: 1204 LBS BW% OF DAM: 5.01%**  
CE: 9.0 BW: 0.4 WW: 60 YW: 108 M: 27 MCE: 8

MAR MAC FARMS & GUESTS BULL SALE

- RED ANGUS -



DAM OF LOT 35 - INDY

**- RED SPRINGHILL PROFIT 15L -**

2317901 SHF 15L JAN 28 2023 PARENT VERIFIED

**35**

★★★  
*calving ease*

*sire* RED LSF TAKEOVER 9943W  
**RED H2R PROFITBUILDER B403**  
RED BROWN MS P707 Y6674

*dam* RED LINDALE CABOT SK 7C  
**RED SPRINGHILL INDY**  
RED CEILIDH TRAIL WENDY 10B

**BW: 92 LBS JAN 4 WT: 1188 LBS BW% OF DAM: 5.50%**

CE: -2.0 BW: 1.6 WW: 51 YW: 90 M: 31 MCE: 0

Here is the full brother to the \$10,000 bull from the 2023 sale. They are so similar we can use the same footnote! His good minded Momma is consistent and easy calving with more than enough milk. She puts a lot into her calves and still puts on weight. Add some performance and efficiency with this attractive thick made bull.



lot  
**35**

**- RED SPRINGHILL RED OAK 14L -**

2323196 SHF 14L JAN 24 2023 PARENT VERIFIED

**36**

★★★  
*calving ease*

*sire* RED SIX MILE JOHN WICK 882E  
**RED SIX MILE MOSSY OAK 175H**  
RED SIX MILE MISS LARK 225E

*dam* RED SIX MILE ELIMINATION 840E  
**RED SIX MILE MARTA 560G**  
RED SIX MILE MARTA 538C

**BW: 70 LBS JAN 4 WT: 1080 LBS BW% OF DAM: 4.60%**

CE: 8.0 BW: -1.6 WW: 48 YW: 82 M: 25 MCE: 9

If you are looking for reliability - here is your bull. Solid Six Mile pedigree on top and bottom. We have been happy with our Mossy Oak calves. Easy coming and quick to get going. With the genetics behind 14L expect solid calving ease without compromising growth and performance.



DAM - 560G



38

**- MAR MAC STRATTON 70L -**

PG1440231 KOB 70L 5/2/2023 PARENT VERIFIED

38

★  
*calving ease*

*sire*  
LFE TRIUMPH 816A  
LFE STRATTON 3094F  
LFE RS AMBER 2140B

*dam*  
DOUBLE BAR D ROYAL 445D  
MAR MAC ESQUIRE 127F  
MAR MAC CARLC 308B

**BW: 104 LBS JAN 4 WT: 1065 LBS BW% OF DAM: -%**

CE: 7.1 BW: 2.2 WW: 63.5 YW: 87.2 M: 20.1 MCE: 1.8

**HOMO POLLED - RED - PUREBRED**

Here is an exciting young Stratton son a well balanced beef bull with added length of body. His dam is one of Melissa's top females. Every year she kicks out very marketable progeny. 70L's half sister sold in the Mar Mac New Generation Female Sale to Oakview Cattle Company and he has a half brother working at Herbert Farm. Dark red with a dab of white on his head. This is an exciting young calf and out of a top Double Bar D Royal Female.

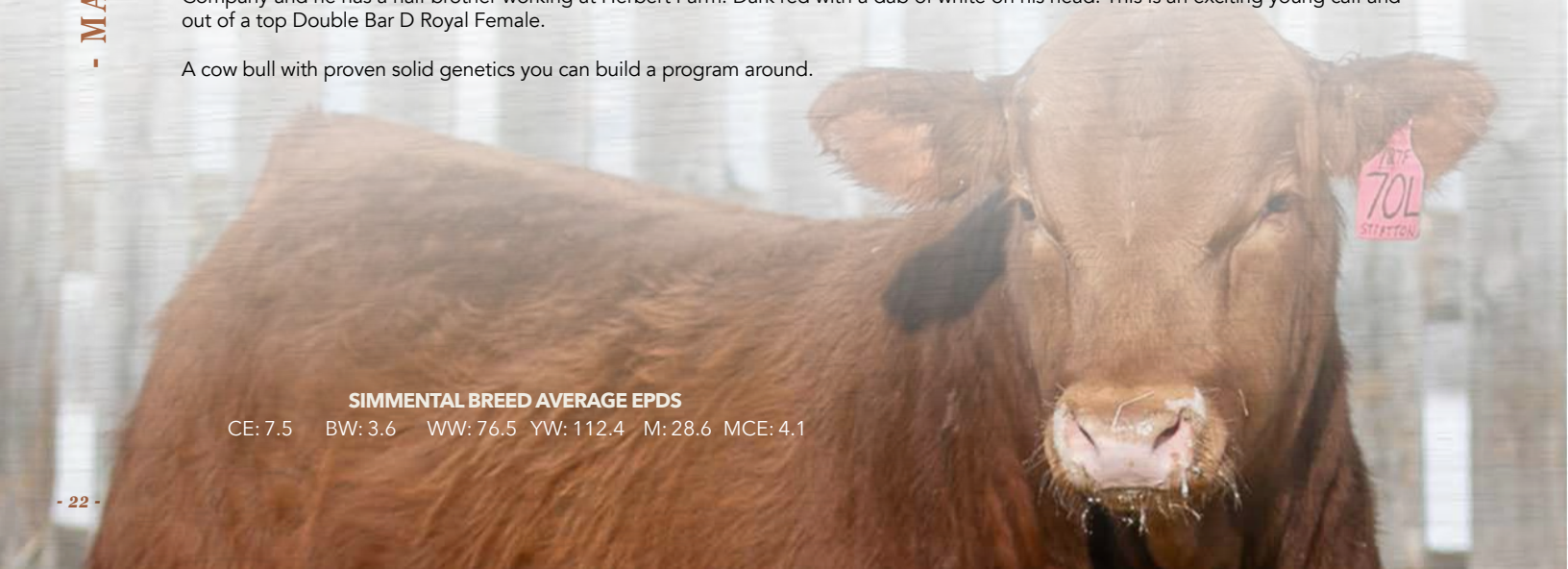
A cow bull with proven solid genetics you can build a program around.



**DAM - KOB 127F**

**SIMMENTAL BREED AVERAGE EPDS**

CE: 7.5 BW: 3.6 WW: 76.5 YW: 112.4 M: 28.6 MCE: 4.1







Stratton was used in our program to add natural thickness. Reserve is just that moderate framed, very thick meaty individual.

Melissa purchased his dam in Simmsational from Labatte Simmentals. Her first son was a Top Tier who sold to Potter Ranch Simmental.

Check out Red Reserve on Sale Day.



**- MAR MAC RED RESERVE 86L -**

PG1440229 KOB 86L 9/2/2023 SIRE VERIFIED

**39**

★★  
calving ease

*sire* LFE TRIUMPH 816A  
LFE STRATTON 3094F  
LFE RS AMBER 2140B

*dam* IPU RED DEPUTY 25C  
IPU 266Z'S MS MERCEDES 132H  
IPU MS. MERCEDES 266Z

BW: 96 LBS JAN 4 WT: 965 LBS BW% OF DAM: -%  
CE: 7.0 BW: 3.6 WW: 64.4 YW: 96.2 M: 18.5 MCE: 1.1  
HOMO POLLED - RED - PUREBRED

**- MAR MAC HAMPTON 73L -**

PG1433033 KOB 73L 6/2/2023 SIRE VERIFIED

**40**

★★  
calving ease

*sire* SVS BETTS 808F  
OAKVIEW HAMPTON 286H  
OAKVIEW DANNI 286D

*dam* MAF NORTHERN RED 79C  
NAC VERONICA 102E  
CW MISSY 2Y

BW: 92 LBS JAN 4 WT: 1156 LBS BW% OF DAM: 5.78%  
CE: 12.4 BW: 0.8 WW: 72.7 YW: 101.8 M: 25.1 MCE: 10.5  
HOMO POLLED - RED - PUREBRED

- SIMMENTALS -

Hampton was selected at the Oakview Simmental Sale and has left thick meaty calves with performance.

This stretchy Hampton son will add some pounds to the calves at sale time.



**40**



Whiskey and Brisk, our two Simmental herd sires in one package.

A tan bull with all some natural thickness and ease of fleshing to your calves. he may leave the tan calves that top the market in the fall at the auction mart.

lot  
41

- SIMMENTAL -

41  
★★  
calving ease

**- MAR MAC LOGAN 106L -**

PG1433065 KOB 106L 15/2/2023 SIRE VERIFIED

*sire* SVS BETTS 808F  
OAKVIEW HAMPTON 286H  
OAKVIEW DANNI 286D

*dams* KKBS RED BRISK 43G  
MAR MAC DEB 16J  
MAR MAC DEB 34G

BW: 86 LBS JAN 4 WT: 980 LBS BW% OF DAM: -%  
CE: 11.4 BW: 2.3 WW: 72.3 YW: 98.1 M: 24.8 MCE: 7.4  
HOMO POLLED - RED - PUREBRED

42  
★★  
calving ease

**- MC-THREE HAMPTON 83L -**

PG1432230 TJM 83L 9/2/2023 SIRE VERIFIED

*sire* SVS BETTS 808F  
OAKVIEW HAMPTON 286H  
OAKVIEW DANNI 286D

*dams* WHEATLAND FRONT RUNNER 896F  
MC-THREE HAILEE 54H  
MAR MAC CARLI 81E

BW: 88 LBS JAN 4 WT: 1038 LBS BW% OF DAM: -%  
CE: 14.8 BW: -0.3 WW: 68.7 YW: 94.2 M: 22.1 MCE: 9.2  
HOMO POLLED - RED - PUREBRED

This smaller frame Hampton bull has a pedigree that tracks back to the Mar Mac Carli cow family. This cow family does not disappoint when it comes to producing calves.



lot  
42

**M3**  
FARMS



**- MAR MAC GR CENTURY 130L -**

PG1433093 KOB 130L 22/2/2023 PARENT VERIFIED

**43**

★★  
*calving ease*

*sire* WHEATLAND RIVAL 8125F  
WHEATLAND NEXT CENTURY 43H  
WHEATLAND LADY 123Y

*dam* EGC EVEREST 145E  
MAR MAC GR GISELA 112G  
CDP GISELA 25C

**BW: 82 LBS JAN 4 WT: 1000 LBS BW% OF DAM: -%**  
CE: 7.4 BW: 2.2 WW: 78.9 YW: 108.5 M: 20.8 MCE: 3.5  
POLLED - RED - PUREBRED

A late February son of Wheatland Next Century. His dam was a good milking, eye appealing daughter of EGC Everest.

**- MAR MAC RIVALRY 8L -**

BPG1440323 KOB 8L 21/1/2023 PARENT VERIFIED

**44**

★★  
*calving ease*

*sire* REMINGTON LOCK N LOAD 54U  
SRH HANNIBAL 5H  
SRH PRECIOUS 73A

*dam* R PLUS YUMA 9087G  
MISS R PLUS 1065J  
MISS R PLUS 4176B

**BW: 90 LBS JAN 4 WT: 1030 LBS BW% OF DAM: -%**  
CE: 13.4 BW: 1.1 WW: 89.9 YW: 141.6 M: 19.4 MCE: 6.6  
HOMO POLLED - BLACK - PUREBRED

- SIMMENTAL -



Melissa selected the Dam of Rivalry in the R Plus Dispersal. A Red Blady female that has lots of milk and did a good job on her first calf. Some of the feature cattle in the R Plus Sale were sired by Hannibal.

lot  
**44**



STRIKER CATTLE CO.

**KIM WARBURTON: 204-724-2354 TYLER WARBURTON: 204-761-6124**

Kim & Tyler Warburton and Families are very pleased to be a part of the Mar Mac Bull Sale. We have a very select set of females that we work with and look to produce the right kind to compliment the purebred industry as well as satisfy the needs of the commercial breeder. Thank you to long time friends Blair and Lois for inviting us to be a part of their sale day. Come have a look at these bulls - we're sure they won't disappoint.



DAM - 498G

**- STRIKER MR 998L -**

BPG1427418 TKW 998L 10/1/2023 PARENT VERIFIED

**45**

☆☆☆  
*calving ease*

*sire* CCR COWBOY CUT 5048Z  
**WS PROCLAMATION E202**  
WS MISS SUGAR C4

*dam* SKORS HIGH ROLLER 34C  
**WLB 34C HEIDI 498G**  
WLB 52Z TARA 4161E

**BW: 98 LBS JAN 4 WT: 1281 LBS**

CE: 7.9 BW: 3.5 WW: 93.5 YW: 136.8 M: 25.1 MCE: 4.7

**HOMO POLLED - HOMO BLACK - PUREBRED**

A Proclamation son out of a standout High Roller daughter purchased at WLB Livestock's dispersal. 998L has tremendous depth and performance. This big black bull has had some admirers for sure.



SIRE - LFE GAME FACE



**- STRIKER MR 701L -**

BPTG1436240 TKW 701L 25/1/2023 PARENT VERIFIED

**46**

★★  
calving ease

*sire* LFE CASH 386D  
LFE GAME FACE 338F  
LFE BS AMBER 60D

*dame* LFE THE RIDDLER 323B  
WLB 323B RITA 445E  
WLB 223W GWEN 402Y

BW: 85 LBS JAN 4 WT: 1050 LBS

CE: 5.6 BW: 3.8 WW: 87.2 YW: 136.1 M: 27.4 MCE: 6.1

HOMO POLLED - HOMO BLACK - PUREBRED

This bull has a tremendous amount of eye appeal. A nice balance of muscle and stretch. 701 is a transplant calf out of WLB Rita, a super Riddler daughter we purchased at Bill and Nancy's dispersal.

**- STRIKER MR 703L -**

BPTG1436253 TKW 703L 30/1/2023 PARENT VERIFIED

**47**

★★  
calving ease

*sire* LFE CASH 386D  
LFE GAME FACE 338F  
LFE BS AMBER 60D

*dame* LFE THE RIDDLER 323B  
WLB 323B RITA 445E  
WLB 223W GWEN 402Y

BW: 112 LBS JAN 4 WT: 1080 LBS

CE: 4.4 BW: 5.3 WW: 85.4 YW: 127.8 M: 27.4 MCE: 5.5

HOMO POLLED - HOMO BLACK - PUREBRED

A full transplant brother to 701L. These Game Face calves have lots of grow and thickness which will help bring in the pounds come fall. We have a full sister at home that is an excellent individual as well.



DAM - 445E

**- STRIKER MR 925L -**

BPG1427420 TKW 925L 23/1/2023 PARENT VERIFIED

**45**

★★  
calving ease

*sire* CCR COWBOY CUT 5048Z  
WS PROCLAMATION E202  
WS MISS SUGAR C4

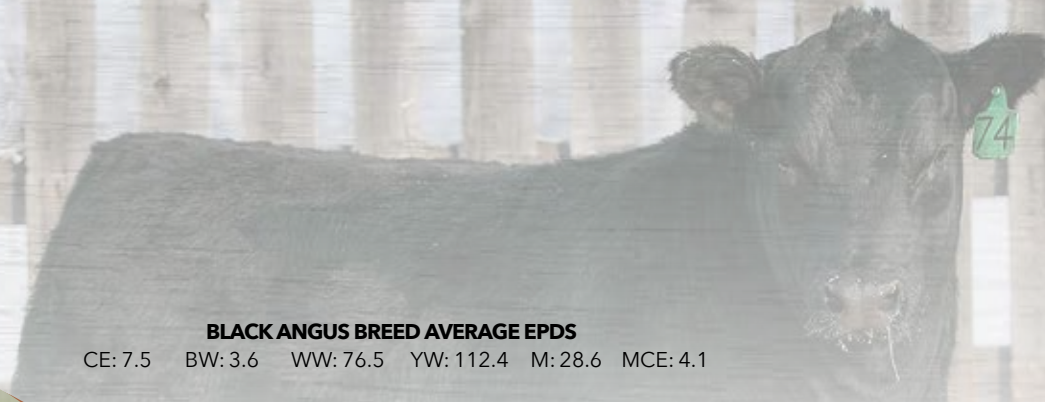
*dame* LFE THE RIDDLER 323B  
WLB 323B RITA 445E  
WLB 223W GWEN 402Y

BW: 93 LBS JAN 4 WT: 1260 LBS

CE: 9.7 BW: 3.1 WW: 101.6 YW: 148.6 M: 26.1 MCE: 6.2

HOMO POLLED - HOMO BLACK - PUREBRED

Rita's natural Proclamation calf. He has been a standout right from the start. Exceptional length and well muscled with calving ease built in. We believe he is really worth a look if you are serious about purchasing a new herd sire with a lot of potential.



**BLACK ANGUS BREED AVERAGE EPDS**

CE: 7.5 BW: 3.6 WW: 76.5 YW: 112.4 M: 28.6 MCE: 4.1

**ANGUS VALLEY FARM BRUCE MCRAE - 204-242-4502**

Glad to be back for the 2024 Mar Mac Farms and Guests Bull Sale. I have a small group of bulls for this year's sale from calving ease to power and performance. I feel that this is my strongest group yet! A big thank you to all who have supported my little program in the past and the future. Give me a call anytime.



**- ANGUS VALLEY RAINFALL 61L -**

2313133 WFM 61L JAN 08 2023

**49**

★★★  
calving ease

*son* COLEMAN CHARLO 0256  
**S A V RAINFALL 6846**  
S A V BLACKCAP MAY 4136 CAF

*dam* PVF INSIGHT 0129  
**ANGUS VALLEY ENCHANTRESS 57H**  
DFCC 34Z DARA 25D

**BW: 83 LBS JAN 4 WT: 1100 LBS BW% OF DAM: 5.27%**  
CE: 6.0 BW: 0.7 WW: 53 YW: 99 M: 25 MCE: 8

Herd bull here, will work well on large framed heifers and cows.  
The dam has a nice square udder and a good disposition.  
An extremely long made bull.

**- ANGUS VALLEY PAY WEIGHT 72L -**

2313157 WFM 72L FEB 09 2023

**50**

★★★  
calving ease

*son* BASIN PAYWEIGHT 1682  
**ANGUS VALLEY PAYWEIGHT 51G**  
SCC TIBBIE 36Z

*dam* STEVENSON TURNING POINT  
**ANGUS VALLEY ERICA 2H**  
ANGUS VALLEY ERICA 29G

**BW: 72 LBS JAN 4 WT: 1000 LBS BW% OF DAM: 5.27%**  
CE: 10.0 BW: -0.2 WW: 60 YW: 100 M: 26 MCE: 10

This is a calving ease bull on top and bottom side.  
Shorter gestation. Wide topped like his dam.

**- BLACK ANGUS -**

**- ANGUS VALLEY EXCLUSIVE 66L -**

2313147 WFM 66L JAN 19 2023

**51**

★★★  
*calving ease*

*sin* LD CAPITALIST 316  
**MUSGRAVE 316 EXCLUSIVE**  
MUSGRAVE PRIM LASSIE 163-386

*dam* POSS ELEMENT 215  
**ANGUS VALLEY TIBBIE 40G**  
SCC TIBBIE 36Z

**BW: 78 LBS JAN 4 WT: 1026 LBS BW% OF DAM: 5.27%**

CE: 11.0 BW: -0.8 WW: 51 YW: 92 M: 27 MCE: 15

**HEIFER BULL**

Three years in a row for 40G. Her calves have been the visitors pick on the pasture every year thus far. I liked this guy as a calf so I bred her back to exclusive. Square, thick and meat.



lot  
**51**

*Angus*

**- ANGUS VALLEY CRACKERJACK 63L -**

2313136 WFM 63L JAN 11 2023

**52**

★★★  
*calving ease*

*sin* MUSGRAVE 316 STUNNER  
**MUSGRAVE CRACKERJACK**  
MUSGRAVE RITO JET A649

*dam* S A V RENOVATION 6822  
**ANGUS VALLEY TIBBIE 13J**  
ANGUS VALLEY TIBBIE 5B

**BW: 79 LBS JAN 4 WT: 1168 LBS BW% OF DAM: 5.27%**

CE: 7.0 BW: 1.1 WW: 64 YW: 116 M: 29 MCE: 7

The grand dam of this bull has had several calves in this sale over the years, all power bulls. Heifer bull all day long.



lot  
**52**

*Valley*

**- ANGUS VALLEY RENOVATION 74L -**

2313159 WFM 74L FEB 12 2023

**53**

★★★  
*calving ease*

*sin* S A V RENOWN 3439  
**S A V RENOVATION 6822**  
S A V MADAME PRIDE 0151

*dam* S A V INTERNATIONAL 2020  
**ANGUS VALLEY ERICA 29G**  
YOUNG DALE ERICA 26U

**BW: 78 LBS JAN 4 WT: 1025 LBS BW% OF DAM: 5.27%**

CE: 5.0 BW: 1.7 WW: 58 YW: 102 M: 20 MCE: 6

A solid made individual out of a nice cow wide topped and tight udder. Her first two calves have been retained in herd.



lot  
**53**



# McRae Land & Livestock

MCRAE LAND AND LIVESTOCK **BRETT & CHANTEL - 204-729-1018**

Welcome to the 2024 McRae Land & Livestock bull sale offering! All of these bull were born on pasture, wintered with their mothers until December of 2022. From there they were background on hay and oats until pasture turn out where they grazed until November 2023.

Our cow herd is based on 3 major principles:

**Fertility:** Cows that come into the fall with a calf in their belly and a calf at side.

**Soundness:** Correct feet and udder structure and a docile temperament.

**Low maintenance:** Cows that do the work on their own without a bunch of fuss!

On top of that, we try to be mindful of the product that we are producing:

*Consistent, Reliable, and Predictable Bulls*

As you have come to expect, each bull has been scored from 1-10 on their feet and docility. 10 being perfect, 1 being the worst. This is not a flawless system, but it should serve as a guide.

We would like to Thank-You for taking the time to look at our program, it really means a lot to us! Please don't hesitate to contact us or stop by for a tour to find out more about this year's bull offering, our cattle herd or our program.

A PROFITABLE, ENJOYABLE, BUSINESS THAT STRIVES TO IMPROVE LAND, LIVESTOCK AND LIVES



SIRE - RAINFALL 6846



SIRE - STONY CREEK



SIRE - COLOSSAL 137



## - MCRAE'S STONY CREEK 431K -

2292584 MCLL 431K MAY 16 2022 PARENT VERIFIED



DAM - 139D

MCLL -

54

★★★  
calving ease

*sire* MERIT STONEY CREEK 4023  
MERIT STONEY CREEK 7035E  
MERIT BLACKCLASS 1184

*dam* PEAK DOT RADIANCE 146A  
SANDY BAR CARON 139D  
FARVIEW CARON 9Z

DOCILITY: 7 FEET: 7

This may be my favourite of the Stony Creek sons this year. I am a bit biased because I have seen his full brother in action. Both of these bulls are moderate framed, docile, and have a ton of eye appeal! These are the kind of bulls that you will want to keep the daughters off of! We are selling his full brother after the sale.

BW: 86 LBS JAN 4 WT: 1225 LBS

CE: 5.0 BW: 1.8 WW: 43 YW: 81 M: 26 MCE: 5



## - MCRAE'S STONY CREEK 427K -

2292581 MCLL 427K MAY 09 2022 PARENT VERIFIED

# 55

★★★  
calving ease

*sire* MERIT STONEY CREEK 4023  
MERIT STONEY CREEK 7035E  
MERIT BLACKCLASS 1184

*dam* S A V RESOURCE 1441  
MCRAE'S JEMINA 421G  
SANDY BAR JEMINA 51C

**BW: 78 LBS JAN 4 WT: 1220 LBS**

CE: 10.0 BW: 0.3 WW: 44 YW: 73 M: 26 MCE: 8

**DOCILITY: 7 FEET: 7**

This is a thick and masculine Stony Creek son out of a very good cow. His dam, Jemina 421G was my favourite of the "G" heifers and she is 3 for 3 in producing great bull calves!



## - MCRAE'S STONY CREEK 429K -

2292582 MCLL 429K MAY 12 2022 PARENT VERIFIED

# 56

★★★  
calving ease

*sire* MERIT STONEY CREEK 4023  
MERIT STONEY CREEK 7035E  
MERIT BLACKCLASS 1184

*dam* COLE CREEK CEDAR RIDGE 1V  
MAR MAC BM TRADITION 406D  
MAR MAC TRADITION 115B

**BW: 80 LBS JAN 4 WT: 1360 LBS**

CE: 11.0 BW: 0.5 WW: 52 YW: 88 M: 24 MCE: 18

**DOCILITY: 7 FEET: 7**

Here is a bull that can do it all! This long bodied, deep ribbed Stony Creek son has the eye appeal and performance of his sire, and the calving ease and maternal strength of his dam. His 1/2 brother was one of our high sellers last year and went to Right Cross Ranch from Kisbey, SK.



## - MCRAE'S STONY CREEK 433K -

2292586 MCLL 433K MAY 19 2022 PARENT VERIFIED

# 57

★  
calving ease

*sire* MERIT STONEY CREEK 4023  
MERIT STONEY CREEK 7035E  
MERIT BLACKCLASS 1184

*dam* TURIHAUA REX E297 CAF  
MCRAE'S ULTRA 412G  
RNRF ULTRA 5127C

**BW: 90 LBS JAN 4 WT: 1205 LBS**

CE: -4.0 BW: 5.2 WW: 49 YW: 80 M: 19 MCE: 4

**DOCILITY: 5 FEET: 7**

Here is a masculine bull from a very maternal cow family. This is a bull that is ready to go out and get to work!





Big, Deep, and Powerful! This SAV Rainfall son is full of eye appeal and performance. His dam, Delia 33C is a proven performer that is known for her depth of rib and volume. This is the kind of bull that will sire a cow herd you will be proud of!



**- MCRAE'S RAINFALL 416K -**

2292572 MCLL 416K MAY 02 2022 SIRE VERIFIED

**- MCRAE'S RAINFALL 407K -**

2293850 MCLL 407K APRIL 28 2022 PARENT VERIFIED

- MCLL -

**58**  
★★  
*calving ease*

*sire* COLEMAN CHARLO 0256  
**S A V RAINFALL 6846**  
S A V BLACKCAP MAY 4136 CAF  
*dam* SCHURR 77 801 7029  
**SANDY BAR DELIA 33C**  
SANDY BAR DELIA 232Y

**BW: 80 LBS JAN 4 WT: 1418 LBS**  
CE: 8.0 BW: -0.3 WW: 45 YW: 84 M: 33 MCE: 8  
DOCILITY: 7 FEET: 7

**59**  
★  
*calving ease*

*sire* COLEMAN CHARLO 0256  
**S A V RAINFALL 6846**  
S A V BLACKCAP MAY 4136 CAF  
*dam* SCHURR 77 801 7029  
**SANDY BAR JEMINA 27C**  
SANDY BAR JEMINA 102T

**BW: 82 LBS JAN 4 WT: 1308 LBS**  
CE: -1.0 BW: 2.8 WW: 43 YW: 83 M: 27 MCE: 4  
DOCILITY: 7 FEET: 8

Rainfall 407K is a small framed bull that is super thick. His dam, Jemina 27C is much the same and she has been a consistent performer in our herd her whole life. If good feet and thickness are important to you, this is your bull!

**59**





I love what Musgrave Colossal has done in our program. His calving ease is exceptional, his calves grow fast and are always impressive at weaning day! This Colossal son is a prime example of that. This bull is long bodied and smooth made, and his dam, Princess 137D has been one of my favourite cows. You won't find a bull better suited for heifers than this!

Lot  
60



DAM - 137D

**- MCRAE'S COLOSSAL 418K -**

2292574 MCLL 418K MAY 03 2022 PARENT VERIFIED

60

★★★  
calving ease

*sire* LD CAPITALIST 316  
MUSGRAVE 316 COLOSSAL 137  
MUSGRAVE LADY BARBARA 545

*dam* PEAK DOT RADIANCE 146A  
SANDY BAR PRINCESS 137D  
FARVIEW PRINCESS 161Z

BW: 78 LBS JAN 4 WT: 1209 LBS

CE: 8.0 BW: 0.0 WW: 39 YW: 71 M: 26 MCE: 15

DOCILITY: 8 FEET: 8

**- MCRAE'S COLOSSAL 413K -**

2292571 MCLL 413K MAY 01 2022 SIRE VERIFIED

61

★★★  
calving ease

*sire* LD CAPITALIST 316  
MUSGRAVE 316 COLOSSAL 137  
MUSGRAVE LADY BARBARA 545

*dam* Z-BAR TEX 29Z  
RNRF ULTRA 5127C  
RNRF ULTRA 127Y

BW: 78 LBS JAN 4 WT: 1230 LBS

CE: 0.0 BW: 2.2 WW: 43 YW: 71 M: 17 MCE: 11

DOCILITY: 8 FEET: 8

- MCLL -

Here is a bull that is sure to catch your eye! He is smooth made and long bodied. His dam is a cow with a lot of volume and a ton of calving ease.

Lot  
61





**- MCRAE'S COLOSSAL 424K -**  
2292578 MCLL 424K MAY 05 2022 PARENT VERIFIED

**62**

★★★  
*calving ease*

*sire* LD CAPITALIST 316  
**MUSGRAVE 316 COLOSSAL 137**  
MUSGRAVE LADY BARBARA 545

*dam* DB OBJECTIVE TREND 861  
**SANDY BAR PRIDE 172C**  
SANDY BAR PRIDE 855

**BW: 88 LBS JAN 4 WT: 1290 LBS**

CE: 6.0 BW: 1.7 WW: 43 YW: 79 M: 25 MCE: 9

**DOCILITY: 7 FEET: 7**

This is another smooth made, long bodied Colossal son. His Dam, Pride 172C, is another favourite cow of mine. She is moderate framed, and has a ton of volume.



**DAM - 172C**



**- MCRAE'S COLOSSAL 408K -**  
2292567 MCLL 408K APRIL 28 2022 SIRE VERIFIED

**63**

★★★  
*calving ease*

*sire* LD CAPITALIST 316  
**MUSGRAVE 316 COLOSSAL 137**  
MUSGRAVE LADY BARBARA 545

*dam* B P F SPECIAL FOCUS 504  
**MAR MAC TRADITION 115B**  
JOHNSTON F.A. TRADITION 858Z

**BW: 87 LBS JAN 4 WT: 1488 LBS**

CE: 8.0 BW: 0.0 WW: 66 YW: 114 M: 26 MCE: 7

**DOCILITY: 7 FEET: 6**

This big, deep bodied Colossal son is the perfect blend of calving ease and performance. His full brother sold in last year's sale to Trevor Woychshyn (Lot 54). His dam, Tradition 115B is the oldest purebred cow in our herd, and she is still producing a great calf every year!

lot  
**63**



**- RED MCRAE'S BLAZIN STEEL 402K -**  
2293848 MCLL 402K APRIL 20 2022 SIRE VERIFIED

**64**

★★  
*calving ease*

*sire* RED 5L RED STEEL 3521-10A  
**RED 5L BLAZIN STEEL 6120-81C**  
RED 5L SUNBURST 2705-6120

*dam* RED MOOSE CREEK RIPZONE 89D  
**MCRAE'S NEONIA 448H**  
SANDY BAR NEONIA 86C

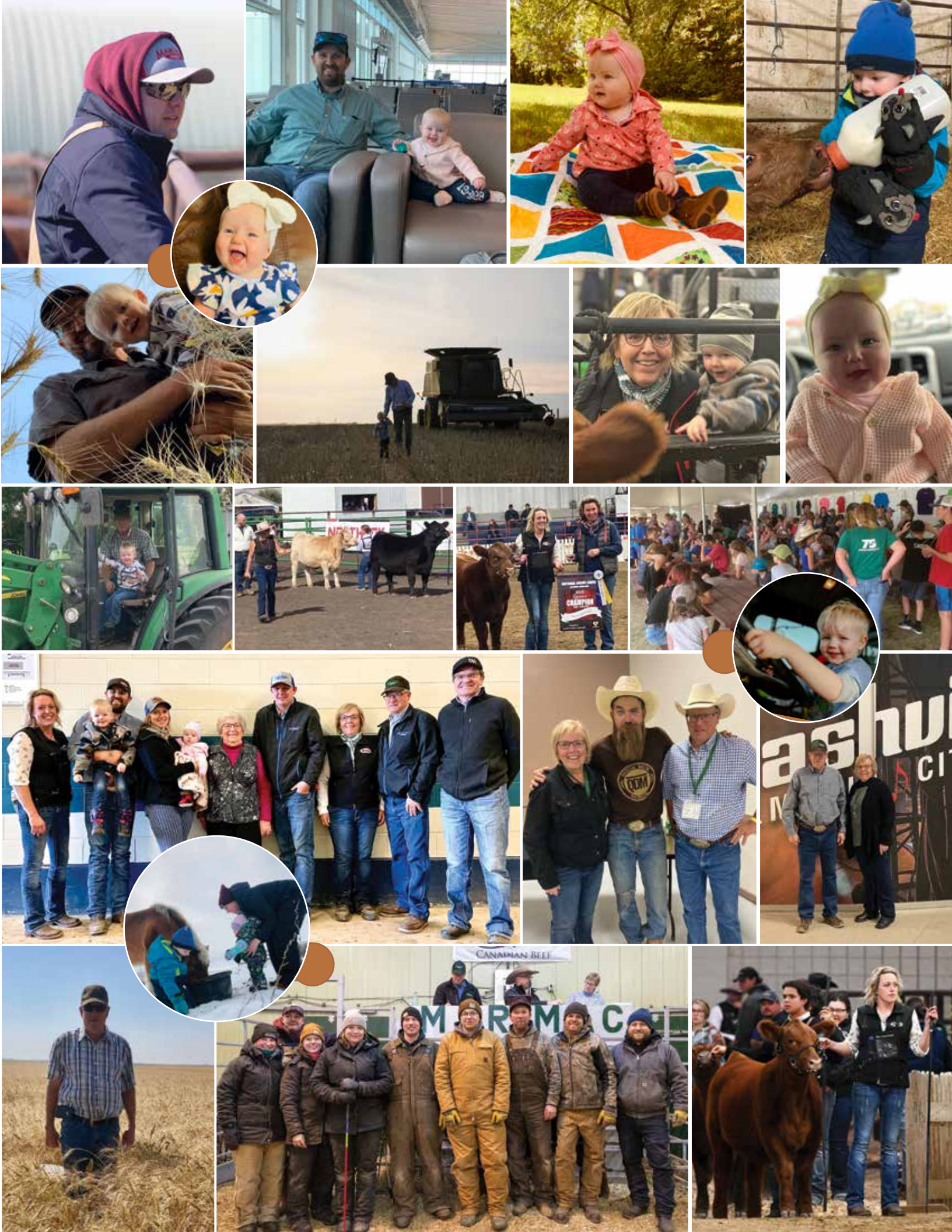
**BW: 66 LBS JAN 4 WT: 1430 LBS**

CE: 1.0 BW: 1.0 WW: 56 YW: 97 M: 27 MCE: 5

**RED ANGUS - DOCILITY: 7 FEET: 7**

Here is a bull with a very cool maternal pedigree. 5L Blazin Steel and Moose Creek Ripzone are two bulls that have been proven to raise good daughters that work in the real world. This bull is long bodied and comes from a very feminine cow. If you are looking for a Red Angus bull that can go to work for you, your search is over!

lot  
**64**



27 PUREBRED BRED HEIFERS AVERAGED \$6446 | 7 COMMERCIAL BRED HEIFERS AVERAGED \$3892

# MAR MAC FARMS



Lot 24A - Mar Mac Mary 97K  
A red Purebred Mar Mac Utah Whiskey Daughter  
sold for \$13,000 to Gary Miskew, AB.



Lot 1B - Red Mar Mac Fran 77K  
A Red Mar Mac Lincoln daughter sold for  
\$10,500 to Koivisto Farms in Minnesota.



Lot 18 - McRae's Neonia 404J  
A daughter of HAR Pinebank sold to Ferme Gagnon, PQ

# Online

December 13-14, 2023

## NEW GENERATION BRED HEIFER SALE

Thank you

TO OUR BIDDERS, VIEWERS  
AND BUYERS

Bar LA Cattle, AB  
Danny Bergeron, QC (2 head)  
Louis Bujold, ON  
Camo Cattle Co., MB  
Crest View Land and Cattle Co. Ltd., MB  
Corey Desrochers, MB  
Robert and Emily Elliott, MB (2 head)  
Eric & Louise Falk, AB  
Glen and Ronnie Ford, PEI  
Ferme Gagnon, QC (6 head)  
HS Angus, SK  
Angela James, MB  
Ashley Kattler, SK (2 head)  
Koivisto Farms, MN  
Malinowki Cattle Company, SK (3 head)  
Dale McKay, MB  
Eric McRae, MB  
Gary Miskew, AB  
Oakview Simmentals, MB  
W.E. Oulton Cattle Company, NS  
Peters Simmentals, SK  
Rocking G Ranch, MB  
Rooke Farms, MB  
Jay Sprott, MB (2 head)  
Springhill Farm Inc., NB  
Thorsteinson Land and Livestock, SK



**Doug Allison**  
Beef Sales Consultant  
Cargill Feed and Nutrition

300 - 240 Graham Avenue  
Winnipeg, MB, Canada R3C 0J7  
Cell 204-724-2652  
Toll Free 800-665-0626  
doug\_allison@cargill.com  
www.cargill.com

We understand they are cattle producers but also understand they are grain producers as well. We encourage producers to grow as many on farm ingredients as they can and we will help fill the nutritional gaps that the forages and grains leave. McRae's do an outstanding job growing quality silages, hay, greenfeeds and grains that help provide protein, energy and some minerals and with their Custom Bull Developer Supplement I provide the nutritional shortages to balance their programs requirements. Over the past number of years we have been able to lower the energy requirement of the diets and increase the forage percentages because of the way the bulls are converting. Conversion is the most economical trait we have and The genetics in the Mar Mac bull program is showing us this.

Our goal is to raise well grown out bulls that will go out and cover females without breaking down and melting away. We want the bulls to mature and grow in a sound development program and we are very conscious about not getting them over

conditioned and to cool down the bulls post sale to get them used to their new surroundings and environment.

The sound nutrition I design will help enhance growth, conversion, and overall performance. Strong emphasis is on structure soundness, feet and legs, hair and reproductive development with increased scrotal development and semen quality. A sound nutritional program keeps all of this in mind.

I balance Mar Mac's feeding programs with Cargill's BEEF MAX Ration Balancing Program. This program balances to different types of proteins, amino acids, fibers, chelated minerals and selenium, vitamins and the natural Diamond V-NaturSafe product to enhance stronger immunity and absorption of nutrients.

Once again the key to a successful relationship is communication. This communication with Mar Mac Farms helps with a part of the success of their Bull Development Program for their customers.

DOUG ALLISON | BEEF SALES CONSULTANT | CARGILL FEED AND NUTRITION | 204-724-2652 | EMAIL: DOUG\_ALLISON@CARGILL.COM

### CUSTOMER SERVICE PLAN...

Give Mar Mac or any other of the consignors a call anytime... Call us a few days in advance of the sale with your bull needs and we will compile a list of bulls that we feel will work for you. As we are with the bulls everyday, we know the qualities in each bull. If we buy a bull for you sight unseen and you do not like him, you don't own him - no problem! Don't forget to check out the videos!

At the Mar Mac and Guests Bull Sale our 60 plus years of experience as a family run operation means CUSTOMER SERVICE is an important part of our business. We stand behind our bulls 100%, sight unseen purchase satisfaction, wintering program, personal contact after the sale of the bull and the coffee is always on for you to come and view our program.

### BULL GUARANTEE...

All bulls have completed a breeding soundness evaluation. If your bull fails to be a satisfactory breeder, we will replace him with a bull of equal value or give you your money back. We make sure you will have a sound bull to service your cows. We will not provide a replacement if your bull has been miss managed. At no time shall the liability exceed the purchase price of your bull. **BULLS UNDER ONE YEAR OF AGE ON SEMEN TEST DAY WILL BE TESTED AFTER THEIR BIRTHDAY, BEFORE YOU NEED THEM.**

### PIECE OF MIND...

Your new bull is a valuable asset and we recommend insuring your bull for infertility coverage and all risk mortality. If you are taking advantage of our wintering program, your new bull must be insured so we both have peace of mind. Insurance will be available from Keystone Livestock Services.

**MAR MAC FARMS & GUESTS RESERVE THE RIGHT TO DRAW SEMEN ON ANY BULLS IN THE SALE FOR THEIR IN HERD USE.**

### DELIVERY...

**IF YOU PICK UP YOUR BULL AT THE FARM ON SALE DAY, YOU CAN SAVE \$200 PER BULL TO A MAX OF \$500 OFF THE PURCHASE PRICE.**

We offer to board your bull free until April 15, after that at cost until you need him. **AS WELL, WE WILL DELIVER YOUR BULL FREE TO CENTRAL POINTS IN WESTERN CANADA OR THE US BORDER AND COST WILL BE SHARED TO EASTERN CANADA.** We will make every effort to get the bull to your farm. Delivery will be as close to the date you request your bull, but will be at our convenience. If you can not take your bull when we are in your area, we would appreciate if you made arrangements to pick up your bull.

### ACCIDENTS...

Although every precaution will be taken to protect the safety and comfort of the buyers, neither the sales staff, auctioneer or consignors assume any responsibility in this matter and disclaim any liability, legal or otherwise, in the event of an accident or loss of property.

### TERMS...

The terms of the sale are cash or cheque payable in Canadian Funds. The right of property shall not pass until after settlement is made. All settlements must be made with the clerks before any cattle are released.



**MAR MAC FARMS IS A STRONG SUPPORTER OF BEEF PRODUCTION PROGRAMS**

**RETURN TO:  
MAR MAC FARMS**

Blair & Lois McRae  
RR 1 Box 57  
Brandon, Manitoba R7A 5Y1

CANADA		POSTES
POST		CANADA
	Postage paid	Port payé
	Personalized Mail	Courrier personnalisé
	4007102	
RETURN POSTAGE GUARANTEED PORT DE RETOUR GARANTI		



OFFERING YEARLING AND COMING TWO YEAR OLDS



**SIMMENTAL**

**BLACK ANGUS**

**RED ANGUS**